



ROK TOK

FEBRUARY
2006

THE DALLAS GEM & MINERAL SOCIETY NEWSLETTER

President's Message

It's a pleasure to work with a great group of officers and committee chairs. We are making tremendous progress on the 2006 Annual Show. While we have the committee chair positions filled, we need some additional help on some of the committees. If you could give a few hours a month to help Linda on her job as vendor chairman or help Steve Wheeler on the advertising committee, please let them know. Their email addresses are on the new, up to date roster. (Thanks, Ben Edens!)

We have done quite a bit of analysis of all categories of the past shows to try to determine the changes we need to make to assure a profitable show in 2006. Please understand that your committees sometimes spend many hours gathering and working with data to make decisions, not counting the time spent in meetings,

and they deserve your respect and support for the decisions they make as a result. The decisions are made with the best benefit of the club in mind, and sometimes they are tough ones. Committee meetings and board meetings are open to all. If you wish to speak at a meeting, please notify me in advance so that we can allow time on the agenda. Your constructive input will be welcome.

To make enough to cover the operations of Dallas Gem & Mineral Society for 2006, we had a profit goal for the 2006 Annual Show. To reach that goal, we made the following changes:

- All tickets will be a **TWO DAY** pass
- Adult price will be \$8 (\$1-off coupons available)
- Children 3 and under are free
- Children 4 to 12 will be \$3 (\$1-off coupons available)
- Scouts in uniform get \$1 off (Additional \$1 with coupon)

Slight increases were also made in vendor pricing to cover the costs of electricity that we absorbed in 2005. The above changes should enable us to hold prices for several years, as well as assure a successful and profitable show for DGMS and our vendors.

Club operating budgets and show budgets were approved at the last board meeting, in compliance with amendments to the club bylaws that were approved by the membership in 2005.

We will be planning a rock swap soon, so look around your yard to see what you might want to trade.

Check the website for info on the Big Bend trip. We got some great material last time, and Brad has planned it around the Marfa Rock Show, so you get a twofer.

continued on page 5

Next Meeting:

February 21, 2006

Tuesday, 7:00 PM

Ridgewood Rec Center

6818 Fisher



Guest Speaker

Dr. Mark Carter

Topic: Collecting Rocks

Mark Carter has been collecting rocks for over 20 years, and he's learned a lot about what to do and not do as a lifetime collector. He'll give us tips on how to make rock collecting more fun, less work, and how to fine tune your collecting techniques.

Members bring a dish to share. A potluck dinner will be enjoyed before the presentation.

DON'T FORGET TO BRING YOUR MEMBERSHIP DUES.

CHARTERED IN 1957

DALLAS
GEM & MINERAL
SOCIETY

2006 OFFICERS

President – Rick Ramsey
First VP – Dave Greenberg
Second VP – Mike Russell
Secretary – Ben Edens
Treasurer – Paul Floyd
Member Rep – Ben Hong

COMMITTEE CHAIRS

Show Chairman –
David Pirnie
Vendor Chairman –
Linda Dallas
Advertising Coordinator –
Steve Wheeler
Field Trip Coordinator –
Brad Tanas
Newsletter –
Coco Johnston
Web site –
Worn Steps Web Design

Membership Dues

DEADLINE

March 31

It's time to renew your DGMS membership. Dues are collected at the beginning of each year.

If you have not renewed your membership by March 31, **you will not be allowed to use the shop equipment.** If your renewal payment has not been received by June 1, you will be dropped from the list of active members and will no longer receive the newsletter.

Your dues are an important contribution to the support of the club, and the money helps maintain the shop equipment.

See **page 5** for information on types of memberships available and where to send your payment.

DON'T HAVE YOUR TEXAS SALES TAX PERMIT YET?

by Coco Johnston

I have been putting off getting my Texas Sales Tax ID because I figured it would probably be as difficult as it was to get a Texas driver's license (which took me four hours). Not to worry. It was a piece of cake.

Go to the DGMS Web site, click on the LINKS button. At the top of the table of links, you will see a link to **TEXAS TAX ID FORM**. Click on that.

You can print it out and write the answers in, or you can just type the answers in while it's up on your screen and then print it out. You'll need to put your signature in the last box.

If some of the questions make no sense to you, just leave them blank and take it with you to the Comptroller's Office. They will tell you what needs to go in each blank.

Once you have it all filled out and signed, mail it in to the address shown in the right column of the first page (Comptroller of Public Accounts).

If you have questions, the Dallas Comptroller's office is at **9421 LBJ Freeway** (just west of Abrams, on the north side access road of LBJ) - **Suite 200**. Take a number when you walk in, as there

is often a bit of a wait. If you turn your form in there, you will leave with an ID number that you can use immediately.

Unless you want to register the name of your company with the State, just name the company by your name. If your name is Joe Dokes, and you get your TX tax ID under Joe Dokes, you don't have to go through another process of registering your business name and then getting your tax ID as "Joe Dokes doing business as (DBA) Good Grief Jewelry."

I'm not sure you should carry around the original document with you. Keep it in a safe place and put a photo copy in your wallet. Then you can shop at ALL those places that require Tax IDs to make purchases. But remember, it can only be used to purchase items required for your business. You will receive a form from Texas asking you how much you have collected in sales tax. You have to pay Caesar what Caesar is due. If you sell only wholesale or on consignment, you won't be required to collect sales tax or to make payments to the state each month/quarter or year. When you do your income taxes, you **will** need to report any income you made from selling the jewelry you made AND you will need to report how much you spent on inventory and what the value of the remaining inventory is at the end of the year.

If you don't have Internet access, you can pick up a form at the Dallas Comptroller's Office (address listed above), fill it out there, and then take a number to get in line to hand it in.

ASK THE PROS

Q. If I get only one piece of equipment, which is better for shaping and polishing cabs: a Genie or a flat lap?

A. What you are taught on and who teaches you might influence which piece of equipment you prefer. In the old days, lapidists were taught on flat, hard rock surfaces to rub the stones until smooth. Later, some of us used the silicon carbide belts. Then Genies and the BFI and Craftsman series flat laps, as well as early facet machines, were used to make cabs simply because one could afford only a single piece of equipment. It's a good idea to remember that you can cab easier on a flat lap than you can facet on a wheel (Genie). *Darrell Harrison*



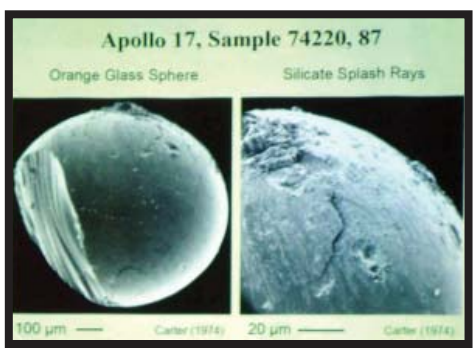
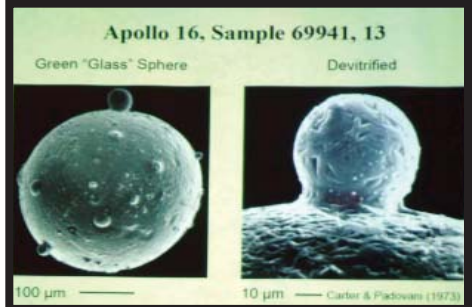
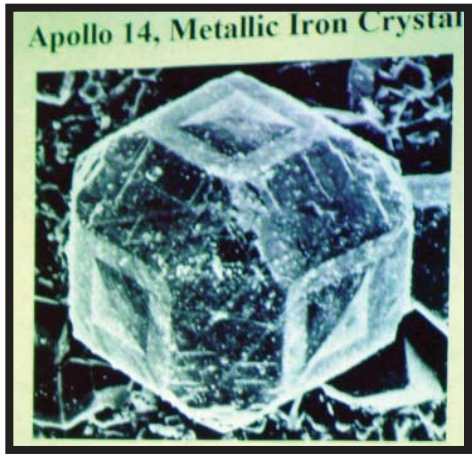
PHOTO HIGHLIGHTS OF THE JANUARY 17 MEETING

LEFT ← Good food, provided by club members, was shared before we all settled down to watch an amazing slide show.



→ **RIGHT**
Three examples of the many extraordinary slides Dr. Carter showed us of the soil samples brought back from Earth's moon. These photos are taken from electron microscope examinations of the minerals found on the moon.

LEFT ← Rick Ramsey (r), DGMS president, hands over a check to Dr. James Carter for the club's annual donation to the scholarship fund.



DON'T take your watch into the shop

by Tom Shehee

A few weeks ago, my watch stopped. I had just replaced that battery about a year ago, and I usually get at least 5 years or more out of a battery, so I thought something must be wrong with the watch. I took it to a watch repair shop, the guy popped the back off, and said that the battery was just fine, but the inside of the watch was full of **oil residue**. He asked if I had any idea where that came from. Of course, I did!

There's a BIG SIGN in the shop that says, "Remove your watch before operating the equipment....the oil could ruin your watch." The last time I was in the shop to slab rock, I forgot that I had the watch on (again). About an hour and a half into the cutting, I remembered and put it into my pocket. (Not good enough.)

The watchmaker sent the watch back to the factory, and \$100 later it will be just like new, after they drain the oil residue from it. I asked the watchmaker how is it possible for a water tight watch to get oil in it. His only comment was, "You'd be surprised."

I share this experience with you to alert everyone that the sign in the shop is there for a purpose, and if you want to keep your watch in good working order, you'd best leave it in the car while at the shop. I asked the guy about putting it in my pocket, and he said that the fumes are so fine that the oil will penetrate anything, including clothing. I guess that's why the Mrs. makes me strip by the washing machine before entering the "good part of the house" after a slabbing session – something to do with the odor. (I know, beats me too, but anything to keep peace in the house.)

You might want to heed the sign at the shop for your own benefit (or do as I did, and give the watch guy a hundred bucks that I could have spent on rocks!).

Field Trip News

March 18 & 19

Jasper & Toledo Bend Lake

The Dallas Paleontology Society, in conjunction with the Arlington G & M and Dallas G & M Clubs, is organizing a joint field trip on Saturday, March 18, to search the Jasper, Texas, area for petrified wood and possibly palm wood. We will meet at the McDonald's in Jasper at 9:00 am.

This will be the same creek that we go to for the Jasper Club's show every Labor Day weekend. The creek contains a bountiful amount of easily found petrified wood. Last year several people also found palm wood. One person found a piece in the creek water, and another found some by probing and digging with a shovel. I can't guarantee palm wood, but I can guarantee large chunks of other petrified wood. You will be able to get all that you can carry. For anyone interested, there may be another trip on Sunday to Toledo Bend Lake for palm wood.

Check the Web site for details:

www.DallasGemAndMineral.org
click on **Field Trips**
or contact
Brian Bowles
bowlesbi@aol.com

April 8 - 16

Alpine, TX, & Marfa Show

Brad Tanas is organizing a trip to Alpine to gather agate and fossils. The trip will be centered around a few days at the Walker Ranch, and then a stop in Marfa, on the way home, for the Gem & Mineral Show. There are plenty of other things to see and do in the area, so bring the whole family.

Check the Web site for details:

www.DallasGemAndMineral.org
click on **Field Trips**
or contact
Brad Tanas
btanas@aol.com

Upcoming Classes

from Mike Russell

Silversmithing

Tuesdays - Feb 28 & Mar 7
7:00-9:00 PM at the shop
Taught by Bobby Thornton: 2 class sessions; cost is the usual club fee of \$20.00, plus whatever material and tool costs run, for those who do not have those items. (Bobby supplies the silver and you pay him.) Class size will be limited to 4. There will be a material and tool list available prior to the start of class.

I am asking those interested to contact me (Mike Russell: 214-906-8834), so that I can organize the class and provide Bobby with the information.

This is a basics class and should supply the beginner with useful info.

Beaded Flowers

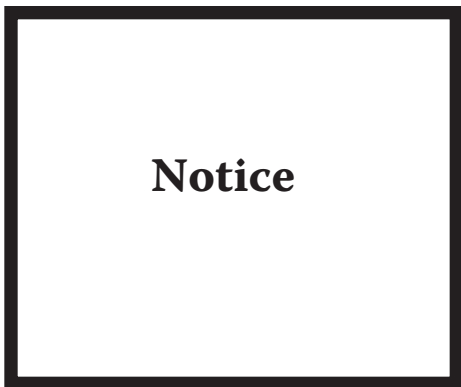
Wednesdays - Feb 15, 22, & March 1
6:30 to 9:00PM,
Three techniques for making Beaded Flowers, taught by Donna Mallory. English, Italian and French styles will be addressed. Cost is the usual club's fee of \$20.00, plus some material costs. Class size will be 2 to 5 students for the three sessions. I have a list of some particulars and ask that all interested parties contact me (Mike Russell), again so I can help present an organized agenda to Donna.

I am organizing a class on etching metal; details to be announced shortly.

Also, there is some talk of more wire wrapping classes.

Please contact **Mike Russell** with any questions or comments.

Phone: 214-906-8834
Email: twinman72@yahoo.com



Notice

Half page vertical



Quarter page vertical



Quarter page horizontal

Half page horizontal



Business card

vertical



Business card

horizontal



ROK TOK ADVERTISING RATES

CLASSIFIED ADS: Ten cents per word;
Members of DGMS: **FREE**

LAYOUT ADS:

	<i>h x w</i>	<i>Non-Member</i>	<i>Member</i>
Full page	10" x 7.5"	\$50.00	\$25.00
6 mos	per mo	40.00	20.00
Half page (h)	5" x 7.5"	30.00	15.00
Half page (v)	10" x 3.25"	30.00	15.00
6 mos	per mo	24.00	12.00
Quarter page (h)	5" x 3.25"	20.00	10.00
Quarter page (v)	3.25" x 5"	20.00	10.00
6 mos	per mo	16.00	8.00
Business card (h)	2" x 3.5"	12.50	6.25
Business card (v)	3.5" x 2"	12.50	6.25
6 mos	per mo	10.00	5.00
Notice	2.25" x 2"	8.00	4.00
6 mos	per mo	6.00	3.00
Photo	one-time fee	10.00	5.00

Rates quoted are monthly; circulation is 200/mo. Layout of ad is included in price. Ad request must be received by the 10th day of each month (preferably by email). Send payment to DGMS at PO Box.

coco@wornstones.com
Dallas Gem & Mineral Society
PO Box 742033
Dallas TX 75374-2033

WEB SITES *worth exploring*

www.samsilverhawk.com/ soldgemsgallery.html <i>or go to Links on DGMS site</i>	Amazing photos of extraordinary cabs; breathtaking.
www.greatcabochons.com	Beautiful photos; plenty to see.
www.bluemud.com	Sterling charms & findings, Good prices, much to choose from.
www.lib.utexas.edu/geo Walter Geology Library	Texas University Geology Library - something there for everyone.
www.rockbarrell.com www.beadworks-dallas.com www.ballybead.com	Local rock and bead shops. Check them out.

Send your Web site suggestions to: coco@wornstones.com

Questions? Suggestions? News? We want to hear from you!

Meeting topics:

Dave Greenberg - davegreenbe@yahoo.com

The Shop & classes:

Mike Russell - twinman72@yahoo.com

Newsletter article ideas:

Coco Johnston - coco@wornstones.com

Field trip suggestions & info:

Brad Tanas - btanas@aol.com

Show suggestions & info:

David Pirnie (ideas): dpirnie@yahoo.com

Linda Dallas (vendors) lindajdallas@gmail.com

Events, resources or Web sites to share:

Coco Johnston - coco@wornstones.com

We welcome your comments, suggestions, questions and ideas.

POST YOUR JEWELRY ON THE WEB
www.DallasJewelryDesigners.com

continued from page 1

President's Message

Even if you can take off a Friday for a 1 ½ day hunt and show, you should consider it. We all had a great time last time.

Randy Smith has volunteered to send out a meeting reminder to everyone on email, so we can increase attendance at our monthly meetings. Thanks Randy. It seems our memories need all the help we can give them.

I'm feeling great about where the club is going in 2006. We have had a lot of new members join in the past few months, and we need to make them feel welcome.... And committee chairpersons need to get them involved! Our club can only be as good as we make it. Our 50th Anniversary is coming up in 2007. We have a chance to host the South Central Federation of Mineral Society's show at our 2007, 50th Anniversary Show, but we need a good base of volunteers before we can consider doing it. If we can host it, we can put ourselves on the American Federation of Mineral Society's map as one of their "doer" clubs. I would like to see us in that prominent position that our club deserves, but I will be open to everyone's opinion regarding this ambitious goal. Let me know what you think!

R²

WANT ADS

BULL WHEEL - the DGMS is looking to buy a Bull Wheel lap polisher/grinder. If you know of anybody who has one they want to sell/get rid of, please contact **Rick Ramsey** (972-998-3929 or email rick.r.1@juno.com).

VOLUNTEERS Needed to help with the **OUTREACH PROGRAM**. Duties include helping with presentations at area grade schools, introducing youngsters to geology and rock collecting. Great fun! **Contact Rick Ramsey** (972-998-3929 or email rick.r.1@juno.com).

Join the Dallas Gem & Mineral Society

DUES

Type of membership	If you join Jan 1 - Aug 31	If you join Sept 1 - Dec 31
Individual Age 16 or older - Eligible to vote & hold office	\$20.00 for the entire calendar year	\$10.00 until the end of the calendar year
Family One household at one address - Two from each household eligible to vote & hold office	\$30.00 for the entire calendar year	\$15.00 until the end of the calendar year
Junior Age 15 or younger - Not eligible to vote or hold office	\$6.00 for the entire calendar year	\$3.00 until the end of the calendar year
Associate For members who are unable to attend meetings - Not eligible to vote or hold office	\$12.00 for the entire calendar year	\$6.00 until the end of the calendar year

Annual dues are payable at the first of each year. Included in your dues is a subscription to the monthly newsletter. Meetings are held on the **THIRD TUESDAY** of each month, 7:00 PM, and a potluck supper is served.

You can pick up a membership application at any meeting, or you can print one from our Web site and mail it, with your check, to:

DGMS Membership Committee

PO Box 742033

Dallas TX 75374-2033

TIME TO
RENEW YOUR
MEMBERSHIP
DUES
ARE DUE

RECREATION CENTER
RIDGWOOD
6818 FISHER
7:00 PM
FEBRUARY 21
TUESDAY
NEXT MEETING

PO Box 742033
Dallas, TX 75374-2033
POK TOK

THE DALLAS GEM & MINERAL SOCIETY NEWSLETTER

UPCOMING EVENTS FEBRUARY- MARCH 2006



The Dallas Gem & Mineral Society is a member of the South Central Federation of Mineral Societies, a regional branch of the American Federation of Mineralogical Societies.

2006 Dallas Gem & Mineral Show
November 18 & 19
Texas ROCKS!
Jewelry•Rocks•Fossils•Prizes
Demonstrations•Games for Kids•Scout Instruction
www.DallasGemAndMineralShow.com

FEBRUARY - MARCH TEXAS GEM & MINERAL SHOWS

FEB 18 - 19 HIGH PLAINS SHOW PLAINVIEW, TX ***	MARCH 4-5 BIG SPRINGS SHOW BIG SPRINGS, TX *** GULF COAST SHOW CORPUS CHRISTI, TX ***	MAR 10 - 12 INTERGEM SHOW DALLAS, TX ***
FEB 25 - 25 CLEAR LAKE SHOW PASADENA, TX	MAR 17-19 INTERGEM SHOW SAN ANTONIO, TX	N TX EARTH SCIENCE SHOW FARMERS BRANCH, TX

February 21
DGMS Monthly Meeting
7:00 PM
Ridgewood Rec Center
6818 Fisher Rd
Dallas

March 2
POGMC Monthly Meeting
7:30 PM
Garland Women's Activity Bldg.
713 Austin
Garland, TX

March 18 & 19
Field Trip to Jasper TX
for Petrified Wood
(see page 3 for details)

LAPIDARY WORKSHOP
A workshop equipped with a wide selection of lapidary equipment is maintained and shared by the Dallas Gem & Mineral Society and the Pleasant Oaks Gem & Mineral Club. Only members of either club who have completed the Qualifying Course are permitted to use the shop equipment.

SHOP HOURS:
Monday evenings
6:00 - 9:00
Saturday mornings
8:00 - noon

If you have questions,
call Mike: 214-906-8834
Shop phone: 214-349-2022

For info on events & the club,
visit our Web site:
www.dallasgemandmineral.org