

President's Message

WOW! Everyone who missed the Big Bend field trip missed a great time! We found about five kinds of agate, completely opalized petrified wood, dinosaur bones, and Brad Tanas found what appeared to be a complete dinosaur skeleton. Being a good citizen, he did not excavate, but marked the area so the landowner could get a paleo group to come in and do it properly. Way to go Brad!

If you noticed a slight shift in rotation of the earth, it's because of the weight of the rock we moved from Big Bend to Dallas and Collin County. Our front wheels were barely touching the ground on the trip back!

We also went to the MacDonald Observatory Fort Davis and other historical sites in the area. We saw **NO** snakes (Dave Greenberg says Hallelujah!), but saw wild turkey, lots of deer, pronghorn antelope, javelina, terrapin, cottontail, jackrabbits, roadrunners, giant, brilliantly colored

grasshoppers, coyotes, impala, and many kinds of birds of prey. This desert is alive!! We also saw many, many different kinds of cactus, some of which we met, up close and personal.

WE NEED YOUR HELP!! We need all hands on deck for our annual show. We need help on Thursday night, loading at the shop, then Friday setting up at the exhibition hall, then all day Saturday and Sunday. We will have sign-up sheets at our meeting on the 15th. If you can't make the meeting, email or call me with this information: which days you can work, what time period you can work on each day, and your preferred tasks. Include your contact numbers as well.

Please be a contributor during this time of our greatest need. The show funds the operation of our shop, as well as the funding for our college scholarships. We have greatly increased our expenses this year, expect a big increase in attendance, and need all the help we can muster to make sure the event operates well.

I am excited about our new slate of officers, and expect a phenomenal year. A successful show will be a great way to start. I am going to work up an email ad and send to each of you. If you will forward to everybody in your address book, we will let several thousand more people know about the show. If even 5% come, we might increase our attendance by another thousand people!

Have a great week, and start getting in shape for the show!

Rick Ramsey

Next Meeting:

November 15, 2005

Tuesday, 7:00 PM

Ridgewood Rec Center

6818 Fisher



WIN

FREE SHOP TIME

Three hours / Two machines

\$18 value!

or

FREE CLASS of YOUR CHOICE

Drawing at meeting!

You must be a DGMS member

and at the meeting

to WIN



The November meeting is an important one. On the agenda is the upcoming DGMS Gem, Mineral, Fossil & Jewelry Show. We need all the volunteers we can get to help with the show. If enough folks can give a couple of hours of their time, it won't be left to a handful of people to do all the work. The more helpers we have, the less time each person has to put in.

Donnette and Linda have worked hard to fill every booth, and we now have a full house for the show.

Members are reminded to bring something to the meeting to share for dinner—a main dish, salad or dessert—and bring along a friend or family member.

CHARTERED IN 1957

BOARD OF DIRECTORS

President - Rick Ramsey

1st Vice President - Linda Dallas

2nd Vice President - Mike Russell

Secretary - Molly Cutting

Treasurer - Dave Greenberg

Newsletter -

Editing & Dist - BK Wagner

Production - Coco Johnston

Show Chairman - Darrell Harrison

Asst. Show Chairman - David Pirnie

Vendor Chairman - Donnette Wagner

Asst. Vendor Chairman - Linda Dallas

Member Rep - Ben Hong

HELP WANTED:

Volunteers are needed for the following tasks at the November Gem Show:

Take tickets & manage sign-up sheets - two people per shift

Hospitality - one person at all times

Kids Mine - Wanda needs helpers, especially Sunday, 10-noon

Wheel of Fortune - this is really fun to do

Door Prizes - need volunteers to manage this

Announcements

Display cases - set up

Security - roam the floor and make sure no one is where they shouldn't be

Drivers & loaders - need help loading stuff up at the shop and taking it over to the show

And there will be more, so please come to the November meeting, and give us a few hours of your time during the show. It will be lots of fun, and you'll be helping a good cause.

New Officers for 2006

At the October meeting, nominations were made for DGMS officers for the coming year.

They are as follows:

Rick Ramsey - President,
David Greenberg - 1st VP
Mike Russell - 2nd VP
Paul Floyd - Treasurer
Ben Edens - Secretary
Ben Hong - 6th board member

They were approved by the members present and will take office the day after the Gem & Mineral Show.

Coming up:

Austin
Gem & Mineral
Show
December 2-4

DGMS
Christmas Party
December 20
7:00 - 9:00



January

Loom Beading
Classes
Date: TBA

Women of DGMS
Meeting
Date: TBA



February

Plainview, TX
Gem & Mineral
Show
February 18-19



INSTRUCTORS
NEEDED

for
Chain Making
Stone Setting
Faceting

.....

Contact Mike
214-906-8834

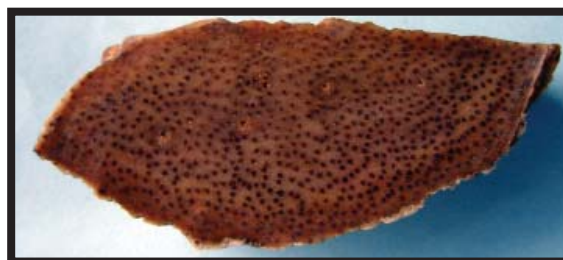


The State Stone of Texas

Petrified Palm wood is a group of fossil woods that contain prominent rod-like structures within the regular grain of the silicified wood. Depending upon the angle at which they are cut by fracture, these rod-like structures show up as spots, tapering rods, or continuous lines. The rod-like structures are sclerenchyma bundles that comprise part of the woody tissues that gave the wood its vertical strength. Petrified palm wood is a favorite of rock collectors because it is replaced by silica and exhibits well-defined rod-like structures and variety of colors. As a result, it exhibits a wide range of colors and designs when cut that can be incorporated into jewelry and other ornamental items. Because it is composed of silica, it is hard enough to polish and withstand the wear and tear of normal use.

In Texas and Louisiana, petrified palmwood is most common in the Toledo Bend area, which is shared by both states. It was left by trees that grew when the Gulf of Mexico's shoreline was much farther north from its present day position.

From Wikipedia



Petrified Palmwood - owned by Rick Ramsey

Share your curiosity:

Email your questions about minerals, jewelry-making, gemology, fossils, or any topic related to gems and minerals, to

BK (wagnerbk@hotmail.com)
or

Coco (coco@wornstones.com)

and we'll do our best to find an answer and put it in this newsletter. You may have the very same questions that others have, and we'll all learn something if we share our curiosity.

Dear DGMS,

My husband I were invited by Brad Tanas to your field trip to W. Texas at Alpine for agates. We had a most wonderful time. The material was great, the company was great and we want to thank you for the best rockhounding we have ever had the privilege of doing.

Again thank you so much for the opportunity. Rick, Alicia, Dave, Jack, BRAD, Bill and Patty were so welcoming and wonderful companions for this dig.

Sincerely,

Francee and Francis Pedneau
Lone Pine Gem and Mineral
Society, Lone Pine California

Don't be
breakin' a shin
on a stool that's
not in your way.

*Proverbial Wisdom
- Robert Masello*



Check DGMS Web Site For Details and Updates

Because this newsletter and our meetings happen only once a month, they don't allow you to know the latest news going on in the DGMS. The Web site,

www.dallasgemandmineral.org

is updated as new information becomes available.

If we hear about an upcoming field trip, rock swap, special event or gem show organized by another club, we post it immediately on the Web calendar.

Get into the habit of checking the UP-COMING EVENTS link often to find out about the latest happenings.

A printable calendar is also available, but changes are made to it as they come up, so you may need to print a new one as events are added to it.

It's the fastest way to get information about what's going on that is of interest to rockhounds.



→
Bill Bryant, DGMS member, brought to the meeting this exquisite obsidian spear head he found in a riverbed in Northern California.

Sand storms are engulfing the Western states

Rockhounds have been asked to return
all collected rocks to their previous
locations.

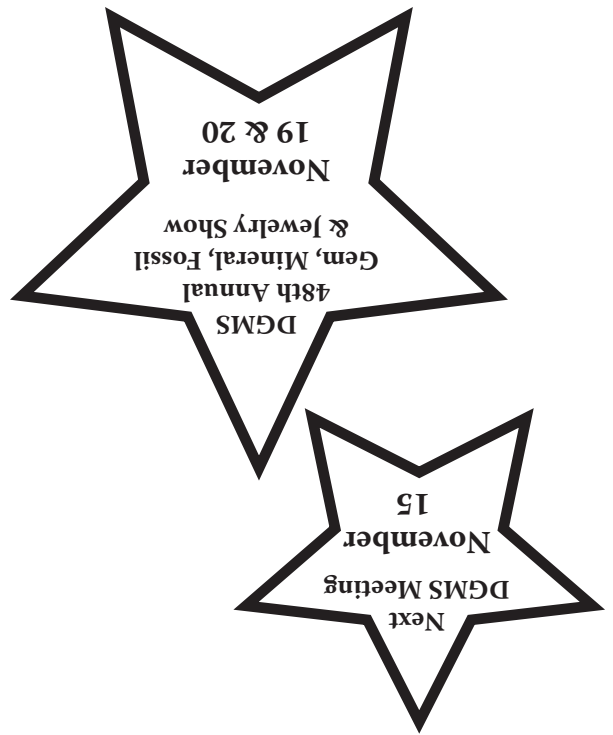
October Meeting Highlights

Tom Shehee (red shirt), DGMS member, and Jim Johnson of Ft. Worth, gave a demonstration on knapping rock to make arrowheads and other sharp tools from stone. The inset above shows some of Jim's work.

For more info on knapping, visit

www.flintknapping.com





Dallas Gem & Mineral Society
 PO Box 742033
 Dallas, TX 75374-2033

CALENDAR OF EVENTS

November 15

DGMS Monthly Meeting

7:00 - 9:00 PM

6818 Fisher (at Trammel)

Dallas, TX

**ELECTION OF
 NEW OFFICERS**

November 19 - 20

DGMS Gem & Mineral Show

Resistol Arena Exhibition Hall

1818 Rodeo Drive

Mesquite, TX

Happy Thanksgiving!

December 1

Pleasant Oaks GMC

Monthly Meeting

7:30 - 9:00 PM

Garland Women's

Activities Building

713 Austin

Garland, TX

December 2-4

Austin Gem & Mineral Show

Palmer Activity Center

900 Barton Springs Road

Austin, TX

SHOP HOURS:

Monday evenings

6:00 - 9:00

Saturday mornings

8:00 - noon

SHOP CLOSED:

◆ November 19

◆ November 26

◆ November 28 ?

If you have questions,

call Mike: 214-906-8834

Shop phone: 214-349-2022

**For details on these events, visit
 our Web site:**

www.dallasgemandmineral.org